



University College Dublin
Ireland's Global University



COMMUTING TO CAMPUS 2025



Commuting by PUBLIC TRANSPORT

Public transport is one of the best ways to get to and from UCD daily. Download the TFI Live app for real time and route planning information.

Dublin Bus Services

Over 20 bus routes serve the Belfield campus, linking UCD to the city centre and suburban areas. Additionally the Belfield campus is served by three 24 hour bus routes that run 7 days a week; the 39a from the campus bus terminus and the E1 and E2 from the main entrance. The 142 bus now passes right through campus stopping at the Sports Centre, Newman Building & UCD Village. The S4 bus serves areas including Liffey Valley, Crumlin, Terenure, Rathgar & Miltown and the S6 bus serves Tallaght, Knocklyon, Rathfarnham, Nutgrove and Blackrock. The S4 and S6 both stop at bus stops within campus. Express buses serve UCD offering fast direct routes from the city, suburban areas and the greater Dublin region.

DART, Luas & Rail

The Belfield campus is located less than 2km from Sydney Parade Dart Station and a shuttle bus is in operation during peak morning and evening hours during term. The S6 bus serves campus every 15 minutes at peak time and connects to the Luas at Tallaght and Dundrum and the DART at Blackrock Station. The S4 serves campus every 10 minutes at peak time and connects to the Luas Green Line at Miltown and Red Line at Kylemore. Heuston Station is directly linked with multiple express X bus services directly serving the station and campus. Connolly Station is served by many routes to campus which pass through the city centre.

Commuter & Private Coaches

Bus Éireann and Go-Ahead Ireland operate nationwide bus services, with most major areas having a regular link to Dublin. Many services terminate in Busáras which is a short walk to O'Connell Street for connecting buses to UCD. Several commuter coach services directly serve the Belfield campus during the peak morning and evening hours. Visit www.buseireann.ie and www.goaheadireland.ie for more information.

Several private coaches serve campus every day from regional and commuter towns. Check with local providers for coach services to UCD. Visit www.transportforireland.ie/plan-a-journey or download the TFI Live app to plan your journey using public transport.

Bus Stops on Campus

There are bus stops located outside every campus entrance and on campus in the following locations:

1. Main Terminus (opposite Glenomena Residences)
2. UCD Sports Centre
3. Newman Building
4. UCD Village

Commuting by BIKE AND ON FOOT

UCD has five dedicated pedestrian and cyclist entrances located at: Roebuck Castle, Roebuck Road, Belfield Office Park, Greenfield Park and Merville House Pedestrian & Cyclist Entrance.

In 2024 UCD was awarded a gold Smarter Travel Mark by the National Transport Authority in recognition of our active and sustainable transport infrastructure and options.

Outside the campus in the surrounding areas many active travel schemes have been delivered and are continuing development improving accessibility to campus for pedestrians and cyclists.

UCD has over 5,000 bike parking spaces, many covered with shelters and all located in close proximity to buildings. Changing and shower facilities are available in many buildings throughout campus. Five public bike repair stations with tools and pumps are also located throughout campus.

UCD also provides two free of charge secure bike parking areas at the Newman and Science buildings equipped with fencing, CCTV and quality bike parking which is accessed via UCard.

Once you receive your campus UCard sign up on our website here: www.ucd.ie/estates/ourservices/commuting.

Commuting by CAR AND PARKING

You should drive to campus only if other options are not possible or viable. During daily peak periods between 09:30-14:00 demand for parking spaces exceeds supply and motorists should expect to wait for a parking space to become available within car parks. Wheel clamping is in place for illegally parked vehicles and vehicles parking without valid permits or parking tickets.

Important: Students living in Student Residences on campus are not entitled to purchase a parking permit. Cars observed and believed to be owned by students in breach of this policy on repeated occasions will be clamped. Invalid permits will be deleted and payment refunds processed.

Permit Car Parking

UCD operates a paid permit parking system for staff and students from 08:00-17:00, Monday-Friday, September to May inclusive. A parking permit allows the holder to search for a parking space in permit car parks. It is not a guarantee of a parking space. The price of a annual parking permit is €100. Parking permits are not valid in Pay & Display parking spaces. Parking permits are not valid in the UCD Sport & Fitness members car park.

Pay & Display and Premium Pay & Display Parking

A number of parking spaces are designated as pay and display and premium spaces. These spaces have respective charges of €1 per hour and €2.40 per hour during the period 08:00-17:00, Monday to Friday, during the Autumn and Spring teaching trimesters.

Kinto Car Pooling

Download Kinto Join and search for the UCD community to connect with other motorists to start car pooling.

COMMUTE with CONFIDENCE

All passengers on public transport should travel in safety and comfort. If you observe and wish to report inappropriate or anti-social behaviour while on public transport contact the service providers with details using the below numbers.



Luas – text “LUAS” and your report to 51444



DART – text “TRAIN” and your report to 51444



Dublin Bus – (01) 873 4222
Go Ahead Ireland – 0818 294 015



Gardaí 999 or 112

We have a communal responsibility to ensure public transport services to the University operate without disruption or cancellation due to anti-social behavior on buses or at bus stops.

To report anti-social behaviour at the UCD bus stops or to request the UCD Walk Safe Service contact the 24 hour University Emergency Line on 01 716 7999 for security support and assistance.

APPS TO HELP PLAN YOUR COMMUTE



TFI Live



Kinto Join
Car Pooling



TFI Go



GoCar
Car Sharing



TFI Driver
Check



Moby Bike
E-bike Sharing



Leap
Top-Up



Blepper
Bike Sharing

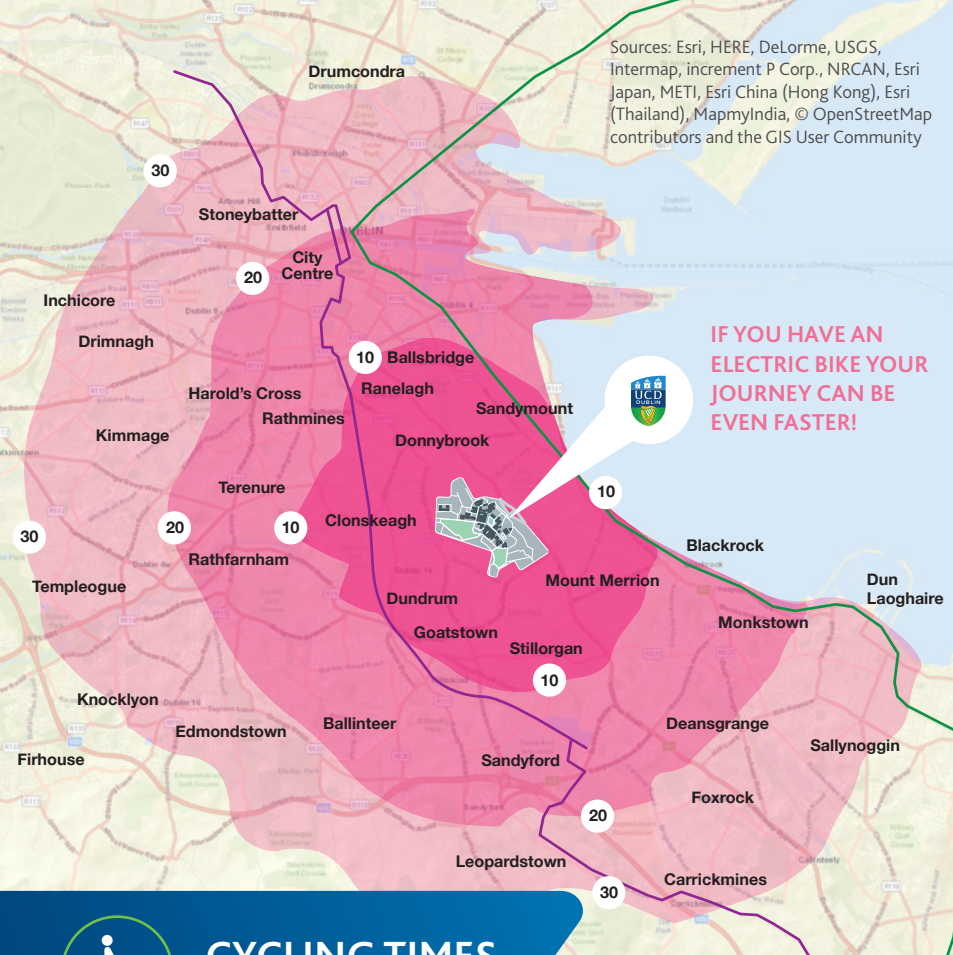


Met Éireann
Weather



For further information and to view this guide online visit www.ucd.ie/estates

Sources: Esri, HERE, DeLorme, USGS, Intermap, increment P Corp., NRCAN, Esri Japan, METI, Esri China (Hong Kong), Esri (Thailand), MapmyIndia, © OpenStreetMap contributors and the GIS User Community



CYCLING TIMES TO UCD

Note: This figure is for diagrammatic purposes only. No measurements to be taken.

Sources: Esri, HERE, DeLorme, USGS, Intermap, increment P Corp., NRCAN, Esri Japan, METI, Esri China (Hong Kong), Esri (Thailand), MapmyIndia, © OpenStreetMap contributors and the GIS User Community



WALKING TIMES TO UCD

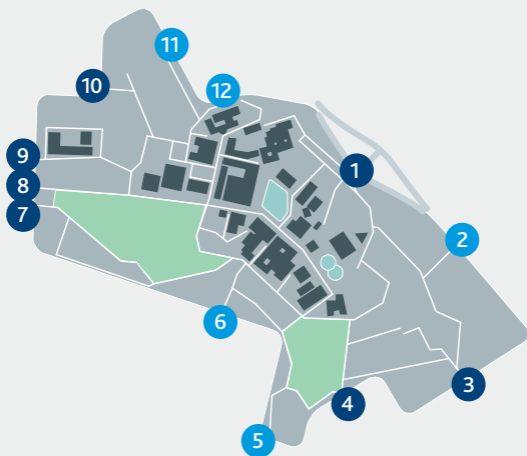
Approximate walking time (minutes)

10

20

30

Note: This figure is for diagrammatic purposes only. No measurements to be taken.



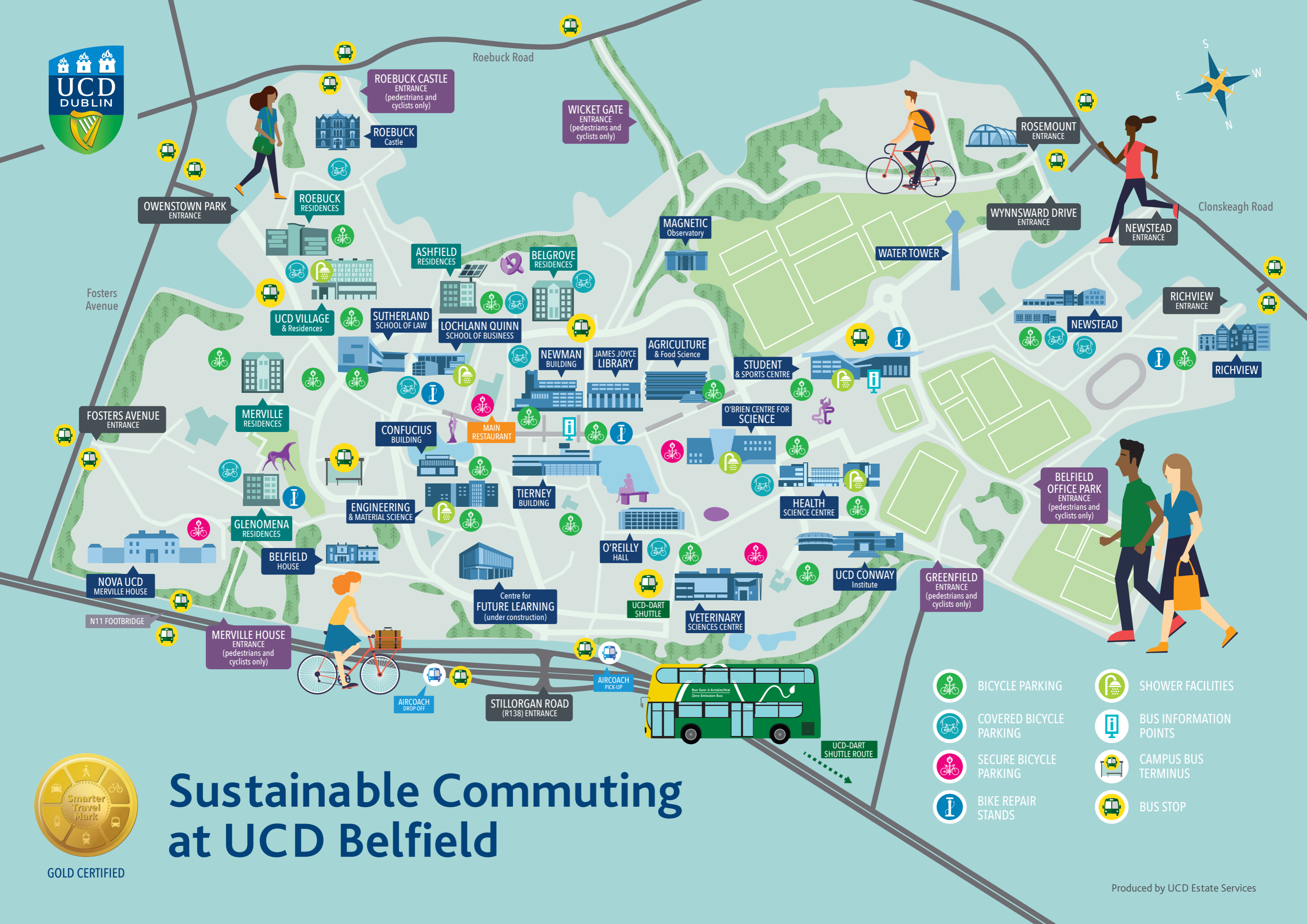
- | | |
|-----------------------|-------------------------|
| 1 N11/R138 | 7 Rosemount |
| 2 Merville House | 8 Clonskeagh |
| 3 Fosters Avenue | 9 Newstead |
| 4 Owenstown Park | 10 Richview |
| 5 Roebuck Castle | 11 Belfield Office Park |
| 6 Roebuck Wicket Gate | 12 Greenfield Road |

- Open for all modes of transport
- Pedestrian & cyclist access only



ENTRANCES TO UCD

Note: This figure is for diagrammatic purposes only. No measurements to be taken.



GOLD CERTIFIED

Sustainable Commuting at UCD Belfield

- BICYCLE PARKING
- SHOWER FACILITIES
- BUS INFORMATION POINTS
- SECURE BICYCLE PARKING
- CAMPUS BUS TERMINUS
- BIKE REPAIR STANDS
- BUS STOP